

# BLOOD FLOWS

THE POWER OF BROTHERHOOD

Technical Rider



A CHOREOGRAPHY BY LOÏCK & EMERICK GENE

## Les GAMAL

**Information:** <https://caminaktion.eu/en/blood/>  
Full footage upon request.

**This technical rider is a presentation of our requirements to present the performances *Blood Flow - The Power of Brotherhood*. The requirements are subject to modifications.**

The signature of the contract entails the acceptance of this technical rider. The organizer undertakes to respect all the terms and not to make any changes without the prior agreement of the company's light manager or the producer.

An adapted light plot will be provided after reception of the venue's technical rider and stage plan.

**Contacts :**

Light designer and -manager: Florent Ecrohart - +33 7 77 07 73 73  
ef.ecrohart@gmail.com

Executive producer & tour manager: Dirk Korell - +33 6 85 43 55 67  
[contact@caminaktion.eu](mailto:contact@caminaktion.eu)

# Running time: 45 minutes / Short forms and show case format: 30 or 20 minutes

# Blood Flows is a performance for 2 dancers.

## **General conditions:**

Please pay attention: for the sake of the magic of the performance and the realization of certain effects, a very deep black in the house and absolute darkness on the stage are required. Emergency blocks that were too bright and too present on the set would prevent certain scenes.

**WE PAY PARTICULAR ATTENTION TO COMPLETE DARKNESS FOR THE FIRST 4 MINUTES. IF ANYTHING PREVENTS THIS CONDITION, PLEASE CONTACT OUR LIGHT DESIGNER.**

## **Equipment to be provided by the venue :**

### • **Stage:**

- Minimum width **8m** / Minimum depth **9m**
- Height under pipes **6.5m**
- Width (wall to wall) **13m**
- Black marley in good condition

### • **Drapery:**

4 levels of black legs and at the stage frame  
4 Black borders (depending on the venue)

### • **Sound :**

FOH + and monitors on stage

### • **Scenic effects :**

1x MDG Atmosphère Touring  
2x Heavy smoke machine (*MDG IceFog Compack* ou *Glaciator* ou *X-SW 2000*). Maybe only one is needed - depending on the stage size

### • **Lights :**

A console from the EOS family.\*

\* **Company's light manager can provide a console for a rental cost of €150 per venue.**

**An adapted light plot will be provided after reception of the venue's technical rider and stage plan.**

**The list of spotlights is likely to change depending on the dimensions of the venue.**

Please provide information and technical sheet of the venue including:

- Ground plan of the stage with fly bars & scale (1/50th if possible)
- Sectional plan of the stage with fly bars & scale (1/50th if possible)
- Plan of the entire stage and audience with scale (1/100th if possible)
- List of available material

!!! If possible, please send us plan in DWG or PDF with a scale of 1/50th or 1/100th. If no scale is provided, please include a plan with horizontal and vertical dimensions on the required plans.

• **Required light material**

- 1x PAR64 CP60
- 6x PAR64 CP61
- 6x PAR64 CP62
- 7x 310HPC
- 5x 310HF
- 3x 329HPC (including 1 with a very clean lens)
- 1x Cin'k 350 LF (or 329HF)
- 8x profiles 613SX
- 2x profiles 713SX
- 7x Elation Fuze Profile
- 6x booms 3 levels, max height 1.80m
- 2x tripods height 1,80m
- 2x floor support
- Black aluminum gaffer tape
- Black foil

**Color filters (subject to change)**

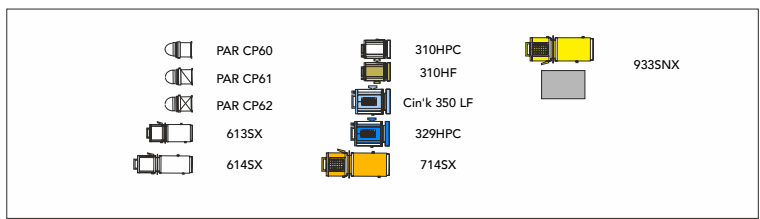
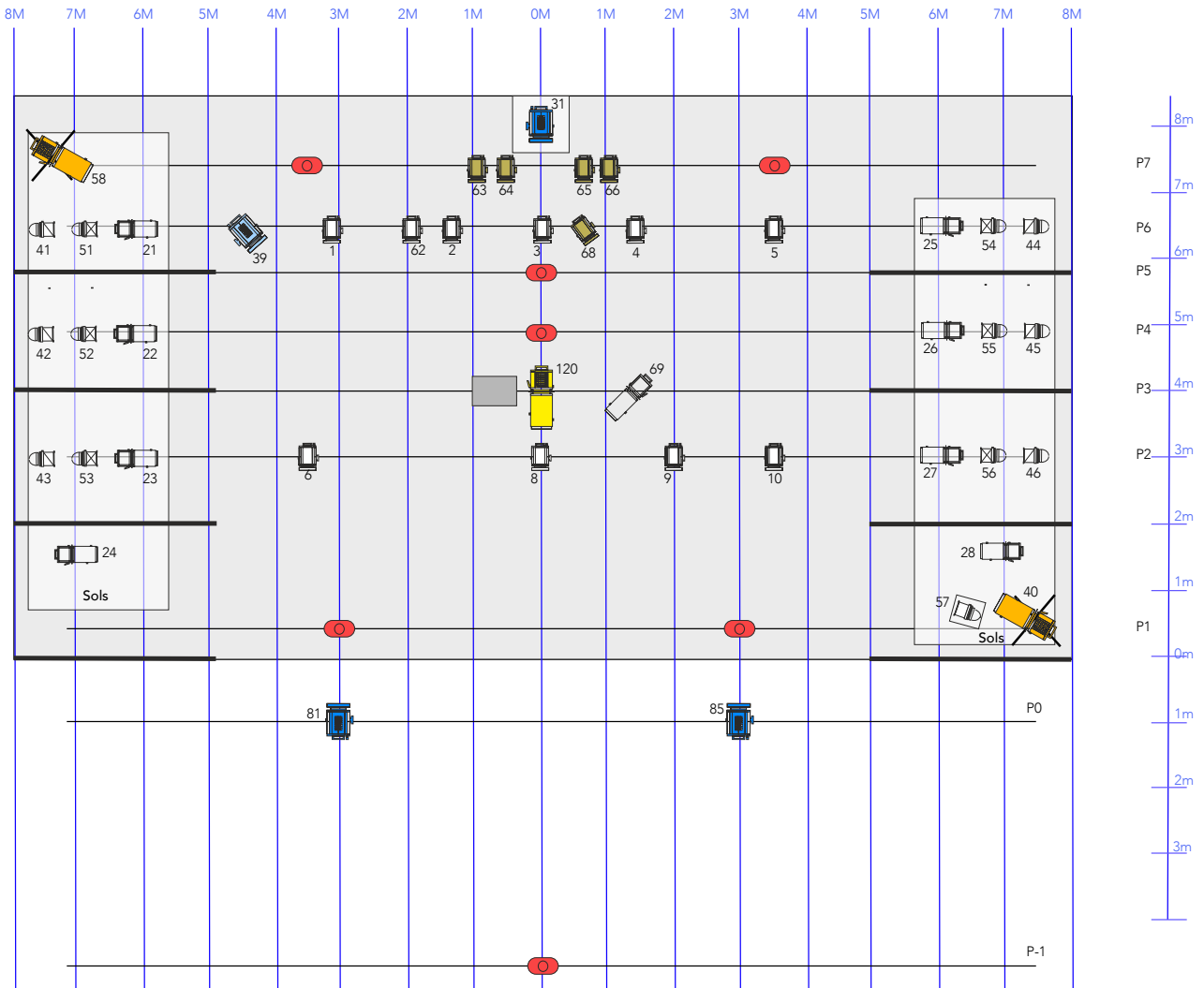
	PAR 64	1KW	2Kw	5Kw	Profile 613	Profile 713
LEE 075		2				
LEE 115				1		
LEE 156					6	
LEE 501	6		2		2	
LEE 550*		1				1
LEE 601*					1	1
#114		5		1		
#119	6		2			
#132		7			6	1

\* : provided by the company

!!! Please check the list of filters according to the plan adapted to your venue, the spotlights can

be replaced according to your technical data sheet

• **Light Plot :**



Plan grill technique et sol échelle 1/100ème  
Vue du dessus

## **Set up**

With a pre-assembly without the company we plan a D-Day assembly with adjustment and operation on two services with 1 lighting manager and 3 technicians.

## **Dressing rooms**

Heated/climatized dressing rooms for 4 persons. With tables, mirrors, chairs, towels, hot showers and toilets nearby. A mat for the dancers to warm up. Catering is requested before the performance: water, sparkling water, coffee, tea, juices... as well as biscuits, seasonal fruit, dried fruit and local products.

## **Miscellaneous**

Please note that no late-coming spectator can enter the house during the 5 first minutes of the performance as we perform with subtle lights in darkness.

Please also provide 1 seat for the producer/tour manager.

**Glad to see you soon!**