

PORTRAITS IN RED

solo choreographed and performed by Wanjiru Kamuyu

TECHNICAL RIDER

March 2024

Production/Administration:

camin aktion
Dirk Korell
+33 6 85 43 55 67
contact@caminaktion.eu

Technical Contact:

WKcollective
Cyril Mulon (Technical Director)
+ 33 6 32 07 08 89
cyril.mulon@gmail.com

Video Trailer: <https://vimeo.com/223324817>

We kindly ask the partner venue to send us a very detailed technical rider with precise equipment listings (lights, sound, maskings and curtains) and information about the grid (dimensions and height).

We also require precise plans with measurements (ground-plan and cross-section) and, if possible, photos of the stage. Please send us a CAD plan in Autocad dwg format.

Once your plans have been received, we will send you an adapted lighting plot and a technical schedule.



Siège : 42 rue du Général Leclerc – 93110 Rosny-sous-Bois
SIRET : 78850042900022 APE : 9001Z
www.wkcollective.com

GENERAL INFORMATION

Running time: 35 to 42 minutes, depending on the size of the stage

Note: dancer is onstage at the beginning of the performance. **If there is no main curtain, house opens preferably 10 minutes before the start of the performance** (preset is done just before the opening of the house).

Company:

- 1 dancer
- 1 technical manager (stage, light, sound)
- 1 touring manager

TECHNICAL SPECIFICATIONS

STAGE

- Italian Black Box: the minimum size is 9m wide by 8m deep with 3 or 4 rows of legs
- Height of the fly-bars: 5m minimum
- Main curtain if possible
- Black marley covering the entire stage of a preferred sprung floor

LIGHTS (*see theoretical lighting plot attached*)

The light and sound desks have to be side by side: the lighting manager of the company operates both desks during the show.

- 2kw PC: 1
- 1kw PC: 32
- PAR 64 CP62: 6
- PAR 64 CP61: 4
- 1kw profile 25°-55°: 8
- 1kw profile 16°-35°: 2
- 2kw profile 15°-40°: 1
- 1kw asymmetric flood: 8

- Side booms (height of the lens: "floor" / 1m / 1,40m): 10
- 2kw channels: 43 (15 on the floor)
- Light desk with programmable cues, playback with "go" and submasters
- Height of the lighting bars: 7m

- LEE filters: 003 – 117 – 162 – 164 – 176 – 503
- ROSCO frosts: 114 – 119 – 132

SOUND

The light and sound desks have to be side by side: the lighting manager of the company operates both desks during the show.

- Standard FOH sound system with subwoofer
- 4 monitor boxes on stage (2 upstage, 2 downstage), installed in the wings, non-visible from the audience
- Sound desk with separated levels for monitors and FOH
- EQ for FOH
- 1 professional CD player
- Clearcom/Intercom between stage and light/sound booth

REQUIRED CREW & TECHNICAL SCHEDULE

A complete pre-set of the lights (patch and filters included), of the black box and sound must be done before the arrival of the company.

The day of the performance, the venue shall provide:

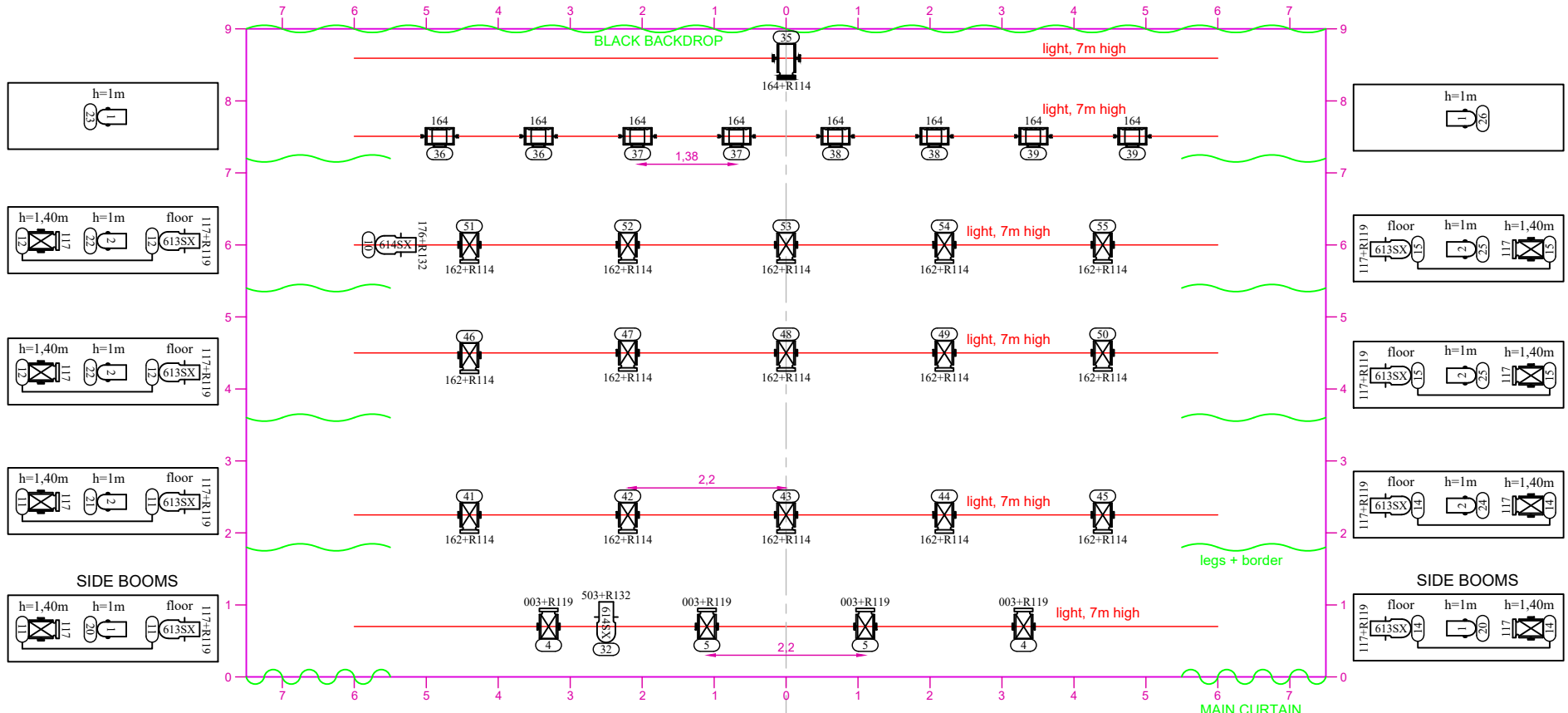
- During a period of 4 hours for the focusing of the lights:
 - 1 lighting manager, 1 electrician
 - 1 stage manager, 1 stage hand/fly technician
- During a period of 3 hours for sound tuning/rehearsals/cueing/run through:
 - 1 lighting manager
 - 1 sound manager
 - 1 stage manager
- During the preset of the show, the performance and the load-out:
 - 1 lighting/sound manager
 - 1 stage manager, 1 stage hand

A wardrobe person is required for the ironing/steaming of the costumes upon arrival (1h).
Costume cleaning – shorts and undergarment – regular cold wash and air drying, for a series of shows or if a run through with costumes is required for a preview or a photo call. In the case of a day to day tour, please provide costume cleaning upon arrival. Please note the red cloth is dryclean only.

A rehearsal studio is requested for the warm up of the artist during the period of light focusing.

DRESSING ROOMS & CATERING

- 1 dressing room for the dancer, with WC, shower, towels and soap.
- 1 dressing room/production office for the technical manager and the touring manager with WIFI access.
- Please provide still water in bottles/fountain (room temperature), fresh fruit with a preference for three bananas and a lemon per show, nuts (walnuts, almonds, cashews), cereal and chocolate bars, fruit juice, coffee and tea.



- 2kw PC x 1
- 1kw PC x 32
- 2kw profile 15°-40° x 1
- 1kw profile 25°-55° x 8
- 1kw profile 16°-35° x 2
- PAR 64 CP62 x 6
- PAR 64 CP61 x 4
- 1kw asymmetric flood x 8

2kw channels: 43 (15 on the floor)
 Height of the lighting bars: 7m

Side booms: 10 (height of the lens: "floor" / 1m / 1,40m)

Filters:
 LEE: 003 - 117 - 162 - 164 - 176 - 503
 Rosco Frost: 114 - 119 - 132



PORTRAITS IN RED
 Wanjiru Kamuyu

Theoretical Lighting Plot
 March 2024
 cyril.mulon@gmail.com