

AN IMMIGRANT'S STORY

solo choreographed and performed by Wanjiru Kamuyu

TECH RIDER

Date of issue: August 2021

Technical contacts

Technical Manager / Lighting Manager

Cyril Mulon
+ 33 6 32 07 08 89
cyril.mulon@gmail.com

Sound Engineer

Jean-Philippe Barrios
+33 6 62 87 19 98
lacrymoboy@gmail.com

Production/Administration contact

camin aktion
Dirk Korell
+33 6 85 43 55 67
contact@caminaktion.eu

<https://caminaktion.eu/immigrants/>

www.wkcollective.com

The Venue shall provide as complete as possible technical specifications (description of the stage and the rigging possibilities in the auditorium, masking equipment, light and sound equipment, technical contacts...) with a ground plan and a cross section of both the auditorium and the stage at a scale of 1/50 if possible. An Autocad file (as autocad 2010) of the venue is also required.

A technical schedule and a specific lighting plot with the stage configuration adapted to the venue will be sent in return.



GENERAL INFORMATION

Running time: 55 minutes

Company:

- 1 dancer/choreographer
- 1 technical manager/lighting manager
- 1 sound engineer
- 1 production/touring manager

Please provide for the company:

- 1 heated dressing room for the dancer, with WC, shower, towels and soap
- 1 dressing room/production office, for the technical manager and touring manager, with a WIFI access
- bags of ice cubes or ice packs
- hospitality: fountain dispenser of still water (room temperature), fresh fruit (at least 1 lemon and 3 bananas), an assortment of nuts, cereal and chocolate bars, honey, fruit juice, tea and coffee.

STAGE AND TECHNICAL CONFIGURATION

The performing space is an Italian type black box, usual size 10m wide x 10m deep. The stage is completely covered with black marley.

The main curtain is open upon entry of the audience.

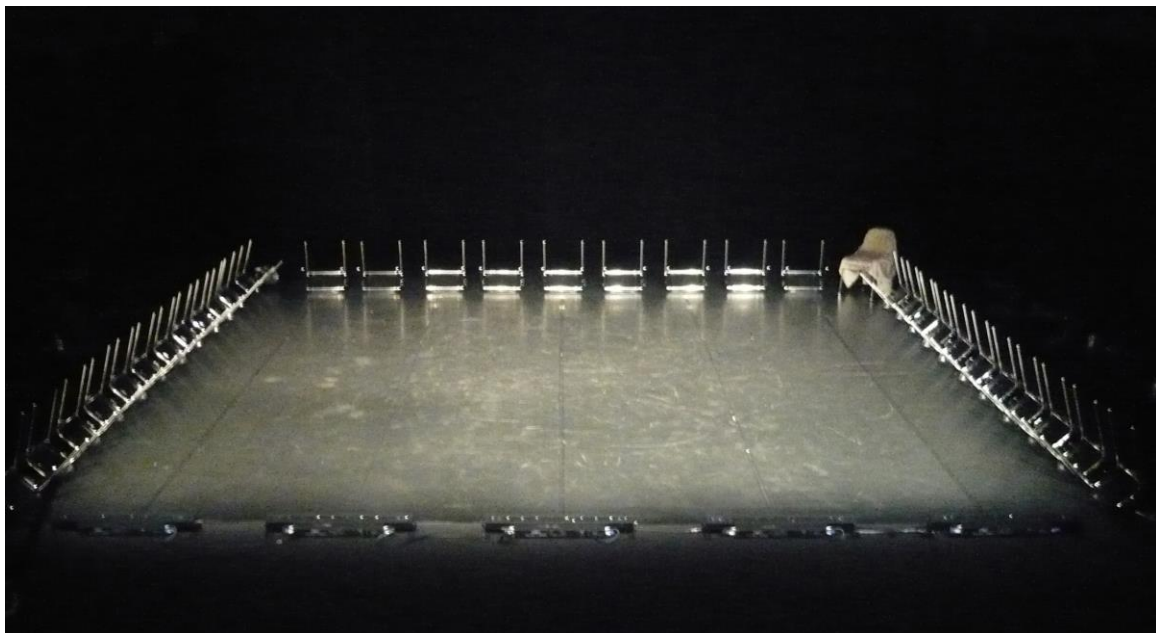
A minimum of 33 black chairs (made of plastic or wood with silver metal chrome-plated legs, to be provided by the venue) are placed upside down and frame 3 sides of the stage – upstage, stages right and left.

During the performance, the dancer enters into the audience space where she immediately puts on a mask in accordance with the COVID sanitary protocols. She walks through the audience from the left aisle to the right aisle. The ushers must take special care that the aisles remain free of people.

The sound score is spatially designed to be heard from different vantage points: foh, 2 speakers rigged in front of the backdrop alongside another pair of speakers offering « surround sound » from the sides or from behind the audience seating.

A black lapel mic with wireless system is required.

Dichroic T10 floor ramps are placed on the floor in front of the performance space; there is a follow-spot lighting effect (equipment to be provided by the venue).



TECHNICAL SPECIFICATIONS

STAGE

- Italian black box, with 4 to 5 wings – *minimal dimensions: 9m in width and 8m in depth. The configuration with a German type black box or with no maskings is also feasible.*
- Width wall to wall: *minimum* of 11m
- Height under the fly bars: *minimum* of 6m
- Black marley covering the entire stage. A sprung floor is preferred.

NOTE: The dancer enters in the dark, from the upstage right wing and never leaves the stage. No cross-over required.

Please provide 35 chairs, completely clean (back, under, front, legs) in plastic or wood with silver metal chrome-plated legs. If the performing space is larger than 10x10m, a few more chairs will be required.



LIGHTS (see attached Theoretical Lighting Plot)

The lighting desk can be operated in the control room.

- 2kw PC: 4
- 1kw PC: 29
- 2kw Profile 16°-35°: 3 (foh)
- 1kw Profile 16°-35°: 17 (10 on the floor)
- 1kw Profile 25°-55°: 8 (2 on the floor)
- 1kw PAR 64 CP 62 MFL: 8
- 1kw Asymmetric Flood: 6, for creating a red house light in addition to the regular house lights (quantity and type of equipment are to be determined depending on the house's configuration)
- Dichroic T10 Sunstrip floor ramps, DMX controlled: 5 (1 channel mode per ramp)
- 575w or 1200w HMI follow-spot: 1
- 12 floor stands for profile
- 2 black cubes of 60cm high (or booms) to have 2 profiles at 1m high (height of lens)
- 3kw channel: 49 (8 on the floor)
- Lighting desk with programmable cues, crossfade and submasters (Avab Cobalt)
- Working height of lighting fly-bars: 7m
- LEE filter: 053 – 103 – 106 – 144 – 152 – 154 – 200 – 202 – 279 – 728
- ROSCO frost: 114 – 119 – 132

The position of the follow-spot is set to follow the dancer on the entire stage but also in the house, from the left aisle to the right aisle within the first 7 rows. Duration of the follow-spot effect: 12 minutes, in the middle of the performance. The follow-spot is operated by the lighting manager of the venue or a lighting technician. There will be a rehearsal of this effect and a run-through. Please provide a clearcom system between the lighting desk and the follow-spot operator.

SOUND

L-acoustics or D&B sound system – for stage, monitors, FOH and surround.

The sound desk has to be in the house, in a central position (not in a booth).

The company provides a laptop, a sound controller and 2 pads that require a working space to the right of the sound desk.

- Standard FOH sound system adapted to the house, with subwoofer
- 2 speakers (L-acoustics X12 or 12XT) under-rigged from a fly bar upstage in front of the backdrop (6m high or under the borders, approximately 6m apart)
- 2 speakers at the back of the audience for a stereo surround effect
- 4 monitor boxes (2 upstage, 2 downstage) on stands in the wings to cover the entire stage
- Digital sound desk (like Yamaha M7CL or CL3) with ADAT input/output, separated levels for monitors, FOH, stage and rear; EQ, reverb and delay for all outputs
- 1 black lapel microphone **DPA 4061** with a complete wireless system (if possible with a small size transmitter)
- For the rehearsals: 1 talkback microphone (SM58) and, if possible, 1 hand held wireless microphone
- Clearcom system between the stage, lighting desk, sound desk and follow-spot operator

PATCH

Input	Equipment	Routing Console	Insert	Notes
SOUND INTERFACE	OUT 1/2	STEREO (+ send to AUX 1/2 – 3/4)		FOH
	OUT 3/4	BUS 1/2		UPSTAGE
	OUT 5/6	BUS 3/4		SURROUND
LAPEL MIC	OUT 7/8	BUS 5/6 (routed to ST)	IN 05 Sound Interf.	FX in Ableton Live

Output	Boxes (type)	Bus Console	Insert	Notes
Monitor USR	12XT	Aux 1/2 (post)		last wing
Monitor USL	12XT			
Monitor DSR	12XT	Aux 3/4 (post)		first wing
Monitor DSL	12XT			
UPSTAGE	12XT	BUS 1/2	2 x EQ 31 parameters (ext or in the desk)	rigged in front of the backdrop at ±6m high (or under the borders) and ±6m apart (2/3 rd of the legs opening)
SURROUND	12XT	BUS 3/4		
FOH	FOH system with Subs	STEREO	2 x EQ 31 parameters (ext or in the desk)	

REQUIRED CREW & WORKING HOURS

The load-in starts the day before the performance (for an evening show).

Please provide a dance studio the day before the performance, 10h-18h, and the morning of the performance day.

D-1		Stage	Light	Sound	Wardrobe
9h-13h	Lights, sound, marley and maskings setup. Without the tech managers of the company				
14h	Arrival of the tech managers of the company				
14h-16h	End of lights and sound setup. Sound desk settings. Setup of the chairs on stage	2	3	1	
16h-18h	Focusing of the lights. Sound desk settings	2	3	1	
18h-19h	Sound check			1	
19h-23h	Focusing of the lights	1	3		
D					
9h-13h	Lights and stage finishing. Lights programming	1	2		
10h-13h	Sound check. Ironing of the costumes			1	1
14h-18h	Rehearsal, cueing, follow-spot, run-through	1	1	1	
	Set up / Performance / Load-out (sound desk, 15 minutes)	1	1	1	

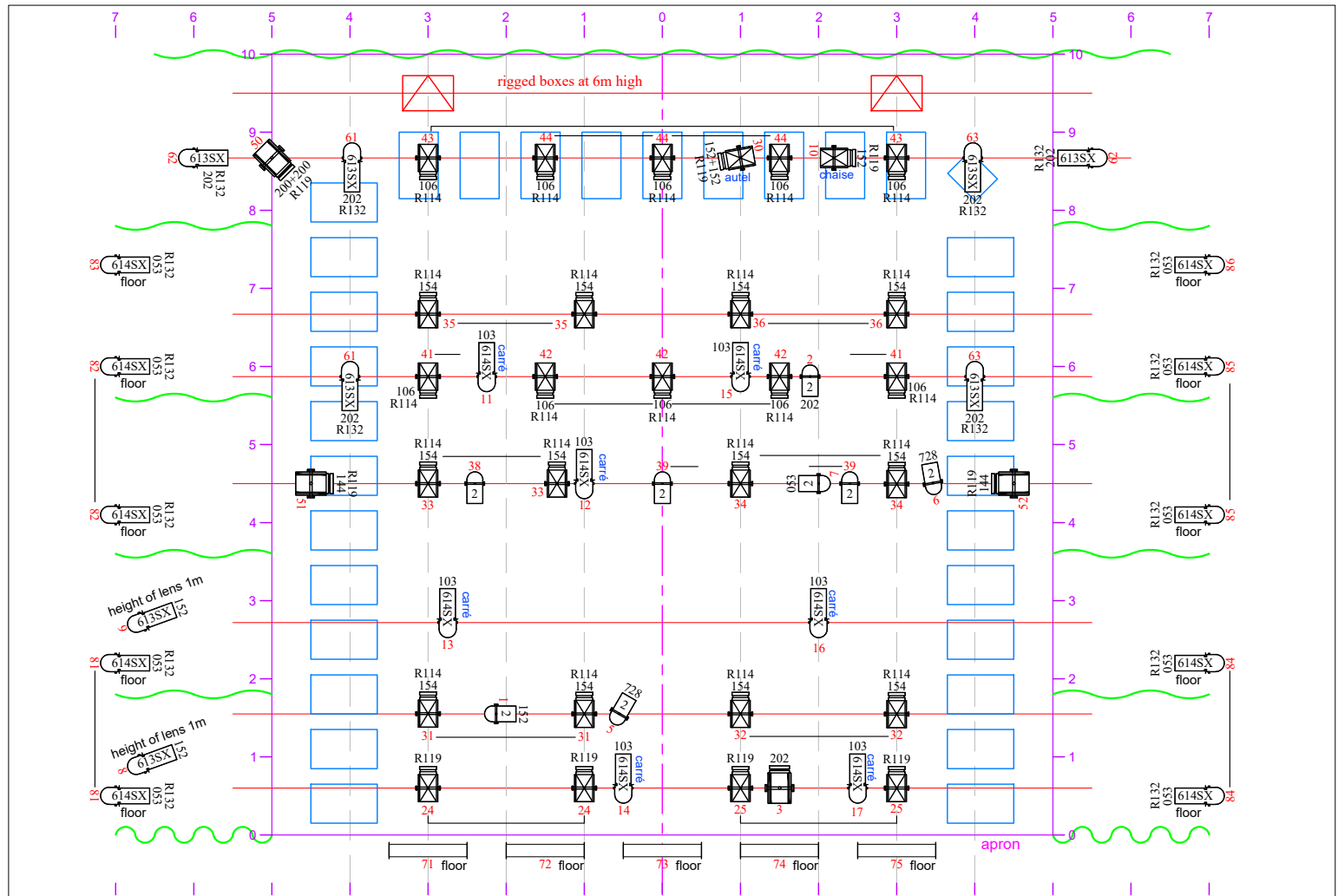
1 wardrobe person is required in the morning of the performance day to iron and steam the costumes. Some mending might be required.

In the case of a day to day tour, please provide a costume cleaning service upon arrival.

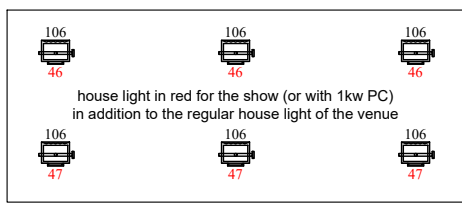
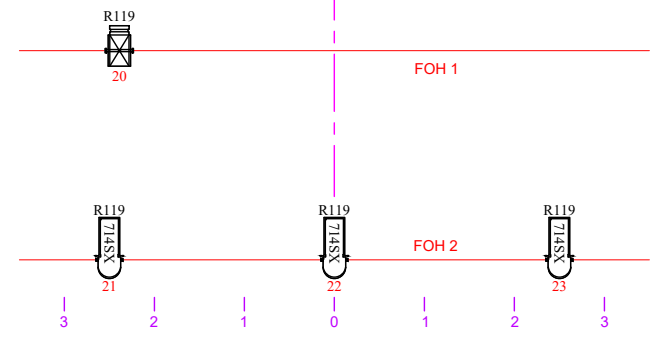
A daily costume cleaning service (short cold wash, dry hang, ironing/steaming) is required between two performances.

Please provide an iron, ironing board and a steamer for quick maintenance (to be done by the company, if there is no permanent venue wardrobe person) after the run-through.

A specific technical schedule adapted to the venue will be send



Black box: 10m wide x 10m deep
 Performing area (outside edge of chairs): 9m wide x 9m deep



279
 on stand next to the light desk
 (to be confirmed on site)

- 2kw PC x 4
- 1kw PC x 29
- 2kw Profile 16°-35° x 3 (foh)
- 1kw Profile 16°-35° x 17 (10 on the floor)
- 1kw Profile 25°-55° x 8 (2 on the floor)
- PAR 64 CP 62 MFL x 8
- 1kw Asymmetric Flood x 6 (for a red house light in addition to the regular house light of the venue)
- Dichroic DMX Sunstrip floor ramp x 5 (1 channel mode)
- 1 HMI 575w follow-spot on stand
- 12 floor stands for 1kw profile
- 2 black cubes of 60cm high to have 2 profiles at 1m high (height of lens)
- 49 channels of 3kw (8 on the floor)
- Working height of the lighting fly-bars: 7m
- 33 silver metal chrome-plated chairs

LEE Filter		
053	1kw profile	10
	par 64	1
	1kw profile	7
106	flood	6
	1kw pc	10
144	2kw pc	2
	1kw profile	2
152	par 64	1
	1kw pc	3
154	1kw pc	12
200	2kw pc	2
	1kw profile	6
202	par 64	1
	2kw pc	1
279	follow spot	1
728	par 64	2

ROSCO Frost		
R114	1kw pc	22
	2kw profile	3
R119	1kw pc	7
	2kw pc	3
R132	1kw profile	16

AN IMMIGRANT'S STORY
 wkcollective / Wanjiru Kamuyu

Theoretical Lighting Plot
 August 2021
 cyril.mulon@gmail.com